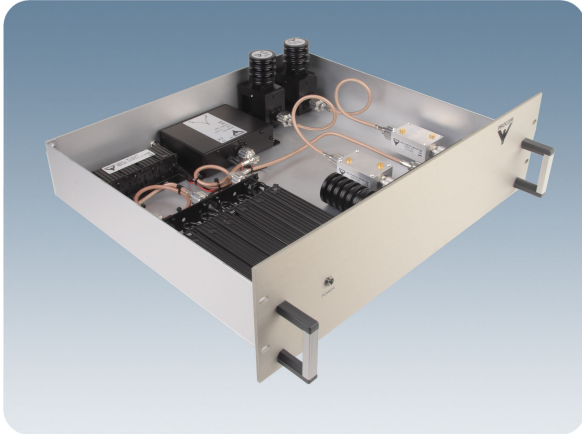


PRO-COM450-HDAR-2/...

2-Channel 19" 3 HU Single Tray Combining System

DESCRIPTION

- An integrated single tray combining solution housing a 2-channel hybrid TX hybrid combiner, duplex filter, active RX multicouplers and preselector.
- Minimal rack space required - only 3 HU.
- Compatible with digital 6.25 kHz channel spacing.
- Single TX isolators fitted as standard (dual isolators available as option).
- 2 RX ports as standard (4 ports available as option).
- Please specify TX / RX frequencies when ordering.



ORDERING DESIGNATIONS

TYPE	PRODUCT NO.
PRO-COM450-HDAR-2/l	210001739
PRO-COM450-HDAR-2/h	210001738
ACCESSORIES	
ADAPTOR AC/DC 12V EU	240000040
ADAPTOR AC/DC 12V UK	240000041

SPECIFICATIONS

ELECTRICAL	
MODEL	PRO-COM450-HDAR-2/...
FREQUENCY RANGE	l: 340 - 400 MHz h: 406 - 470 MHz
MAX. INPUT POWER PER CH	35 W
MAX. TX-TX SPACING, Δ TX	2.0 MHz
MIN. TX-RX SPACING	5 MHz
INSERTION LOSS - TX PATH	< 5.0 dB
TX-TX ISOLATION	> 70 dB
ANT-TX ISOLATION	> 40 dB @ 25° C
RX ISOLATION IN TX BAND	
TX-TX spacing < 0.5 MHz	> 85 dB
TX-TX spacing > 0.5 MHz	> 65 dB
TX ISOLATION IN RX BAND	
RX-RX spacing < 0.5 MHz	> 85 dB
RX-RX spacing > 0.5 MHz	> 65 dB
RX-RX ISOLATION	> 20 dB
IMPEDANCE	Nom. 50 Ω
SWR	≤ 1.5
LNA NOISE FIGURE	< 3.5 dB
GAIN - RX PATH	1 dB +/- 1 dB (factory set)
CURRENT CONSUMPTION	500 mA @ 12 VDC
MECHANICAL	
TEMP. RANGE	-30° C \rightarrow +60° C
CONNECTORS	N-female
DIMENSIONS	19" x 3 HU x 400 mm (483 x 133 x 400 mm)
WEIGHT	Approx. 6.3 kg

ADAPTOR AC/DC 12V EU



ADAPTOR AC/DC 12V UK



PROCOM A/S reserve the right to amend specifications without prior notice.
02/10/14