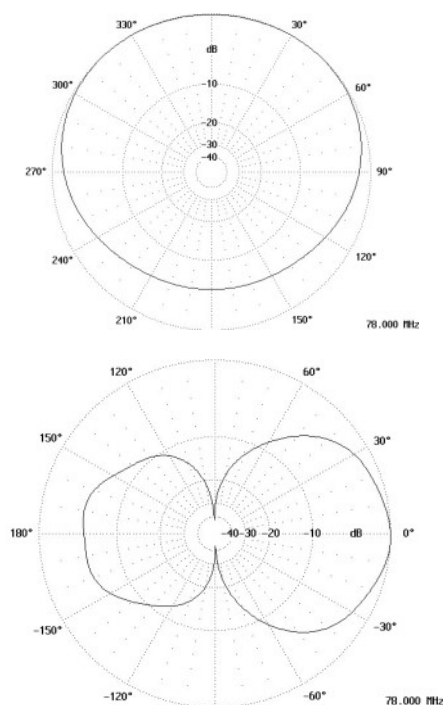
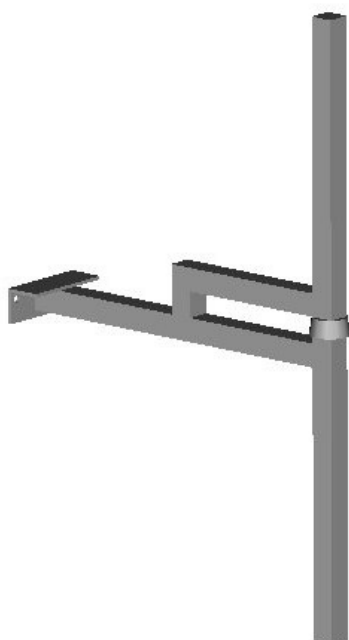


LOW GAIN BASE STATION ANTENNA AV1312-1



Type	AV1312-1
Frequency	118...136 MHz / 118...144 MHz
Bandwidth	18 MHz / 26 MHz
Impedance	50 Ω DC grounded
VSWR	1,5 max / 1,8 max
Polarisation	Vertical
Gain	2 dBi
E-plane 3 dB beamwidth	70°
H-plane 3 dB beamwidth	200°/depending on mounting
Electrical downtilt	None
Front to back ratio	6 dB/depending on mounting
Max. Continuous power	0,5 kW
RF-connector	N or 7/16 female
Operational windspeed	40 m/s (default)
Survival windspeed	55 m/s (default)
Wind area	0,04 m ²
Dimensions (H x W x D) (\varnothing x H)	1060 x 160 x 646 mm
Weight	3 kg
Mounting diameter	\varnothing 30...115 mm pipe
Materials	Aluminium Glass reinforced PE
Options	-